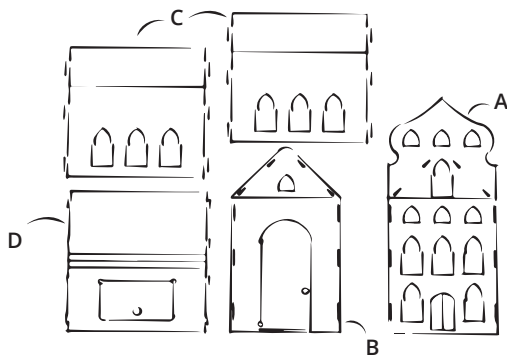
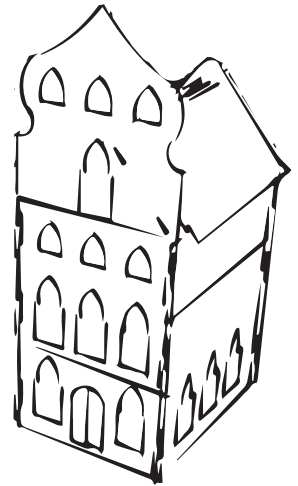


ARABISCH SPEELHUIS

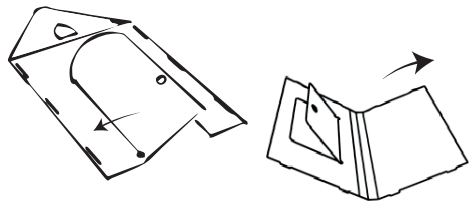
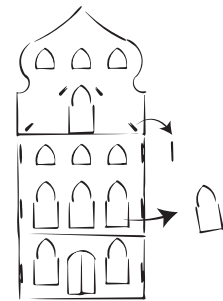
WHAT'S IN THE BOX?

- 1x Front facade A
- 1x Back B
- 2x Side C
- 1x Roof D

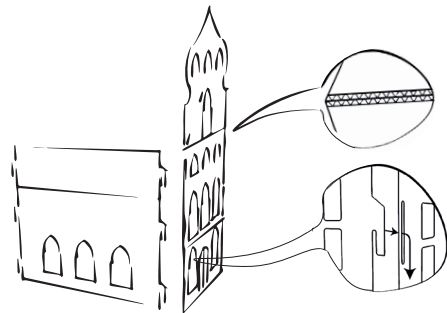


1. Check that you have all the parts.

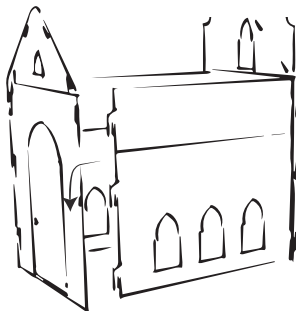
2. Break out any loose parts.



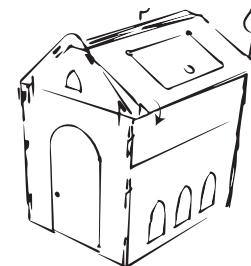
3. Carefully fold all fold lines once.



4. Make sure the cuts are on the outside of the house and then hook the side walls into the cutouts in the front gable.



5. Hook the other side of the side walls into the back wall.



6. Clamp the roof between the front and rear facades by clicking the roof protrusions into the recesses.