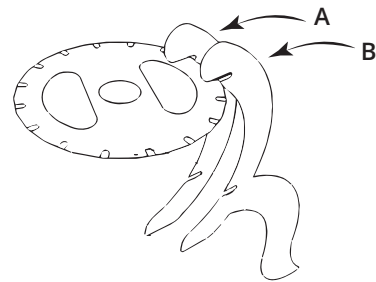
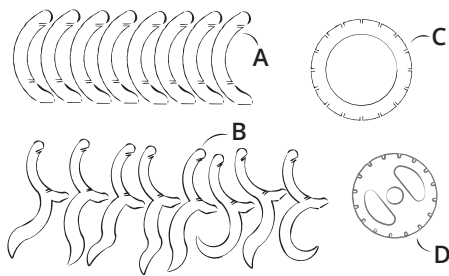
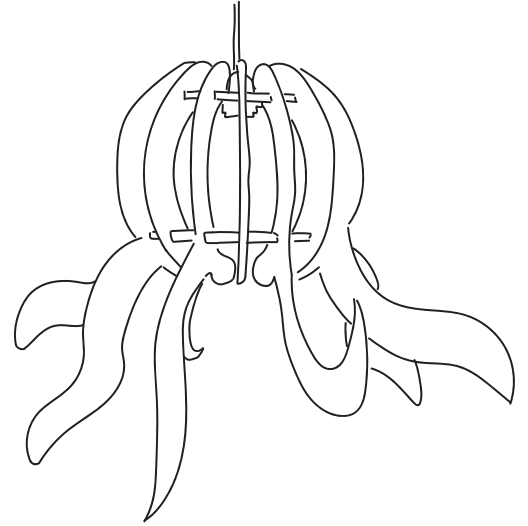


OCTO LAMP

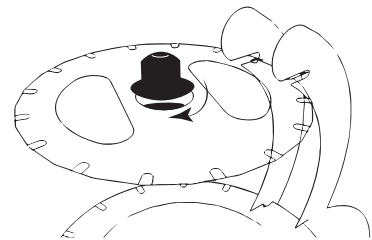
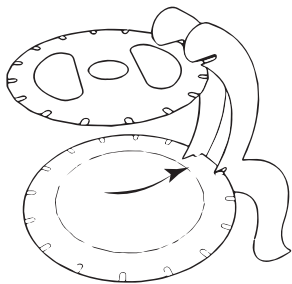
WHAT'S IN THE BOX?

- 8x Slats A
- 8x Octo slats B
- 1x Ring under C
- 1x Ring above D



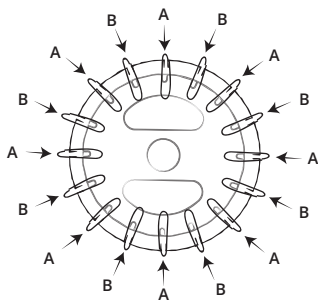
1. Make sure you have all the parts.

2. Slide part A and part B into the slots of part D.



3. Slide part C into the remaining slots of part A and part B.

4. Twist the socket of the lamp into the hole of part D.



5. Slide parts A and B alternately into the slots of parts C and D.