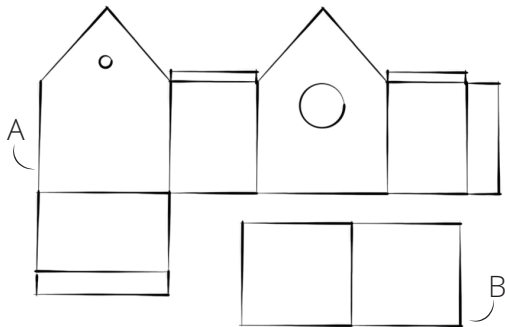
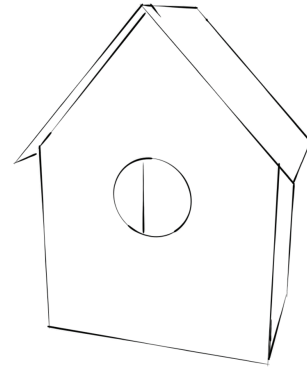


BIRD HOUSE

WHAT'S IN THE BOX?

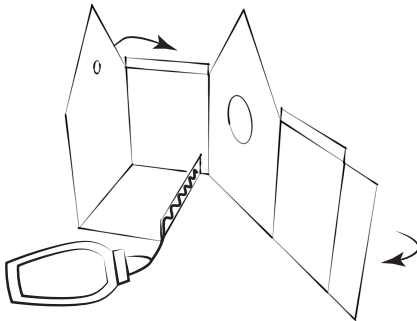
1x House A
1x roof B

ATTENTION! The glue must be added yourself!

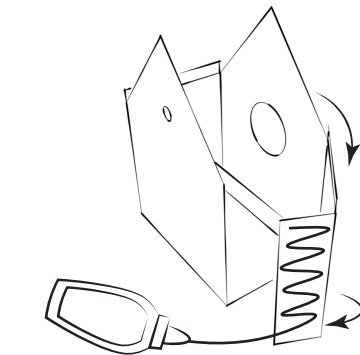


1. Take the parts out of the box. Check that you have both parts and are in good condition.

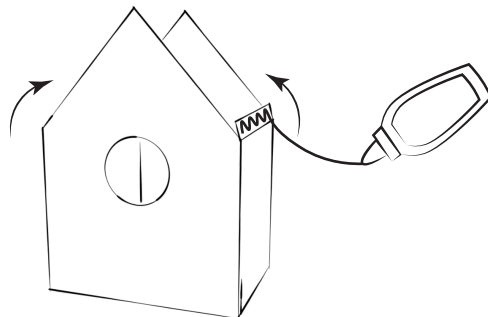
2. Fold the two sides at the bottom of the house at a 90 degree angle as shown.



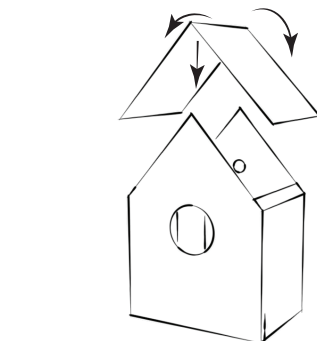
3. Fold the sides of the house and glue the raised edge of the bottom.



4. Then fold the sides of the house again and glue the adhesive edge.



5. On both sides of the house, fold the flap at the top inwards and glue it.



6. Fold the roof into the correct shape and then place it on the adhesive edges.