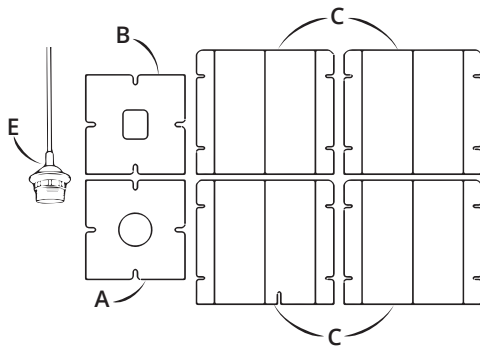
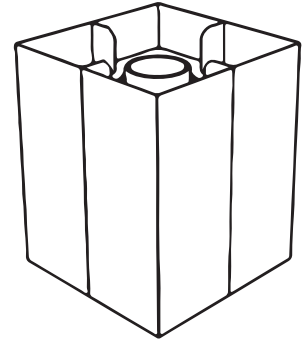


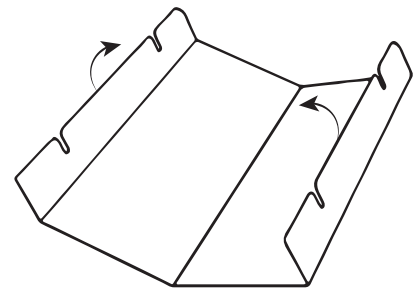
# EIDSELVA

## WHAT'S IN THE BOX

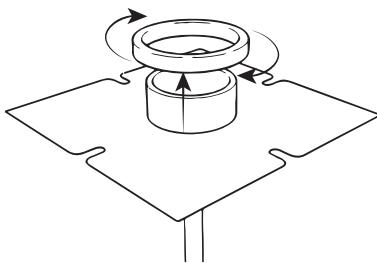
- 1x Top A
- 1x Bottom B
- 4x Side part C
- 1x Lamp socket E



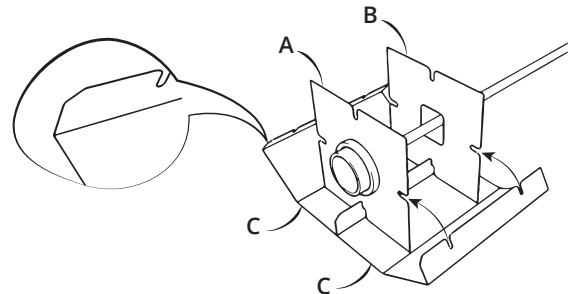
1. Check if you have all the parts.



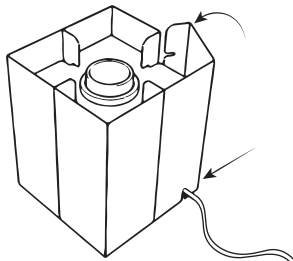
2. Fold the fold-lines of parts C once with the white side on the inside.



3. Unscrew the upper ring of the socket. Push the socket through part A with the white side facing up. Screw the upper ring back on the socket.



4. Put the cable through part B and slide the cut-outs of A and B into parts C as shown above.



5. Repeat the last step until the lamp looks like the image above. Put the cable through the cutout and your lamp is finished!