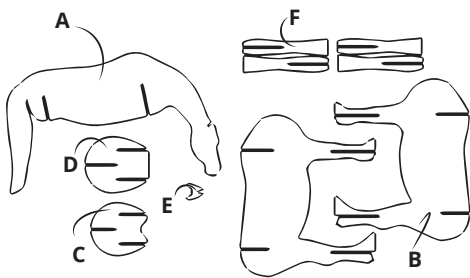
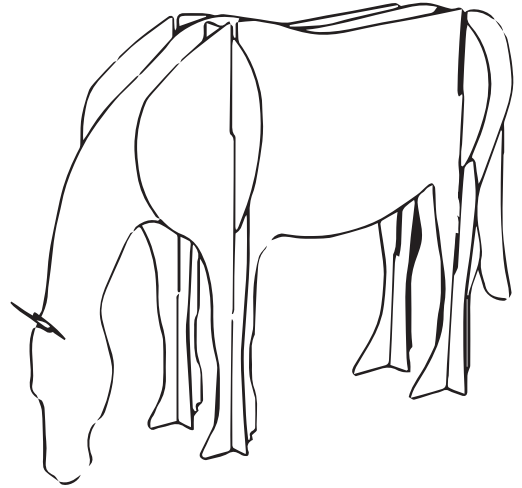


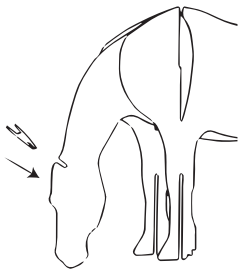
Horse

WHAT'S IN THE BOX?

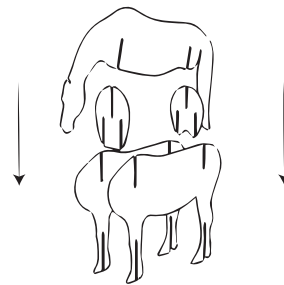
- 1x Body A
- 2x Legs B
- 1x Connection shoulders C
- 1x Connection hips D
- 1x Ears E
- 1x Legs F



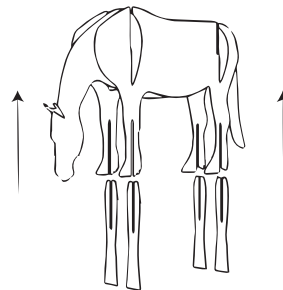
1. Check if you have all the parts.



3. Place the ears in the head.



2. Slide all the parts together as shown in the figure. Place connection C at the front.



4. As the last step, slide leg F into leg B. Do this for all legs.