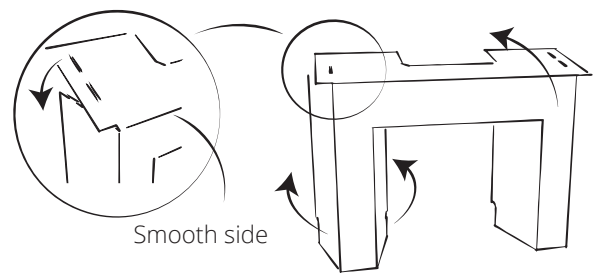
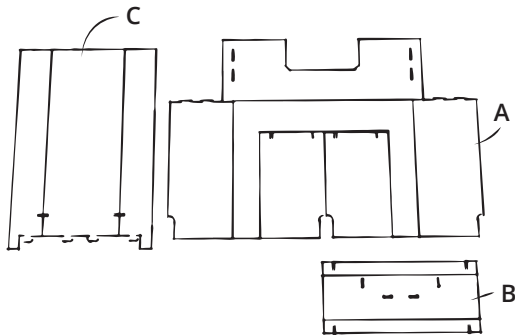
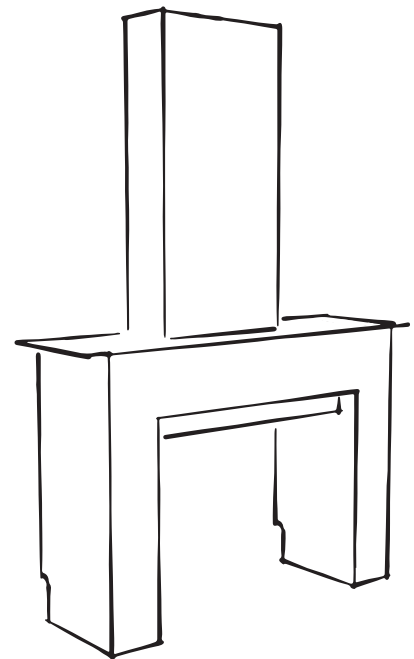


# CHIMNEY

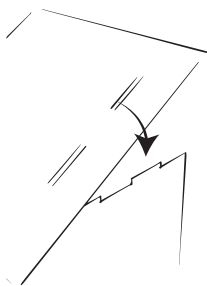
## WHAT'S IN THE BOX?

- 1x Front chimney A
- 1x Back Piece B
- 1x Chimney C

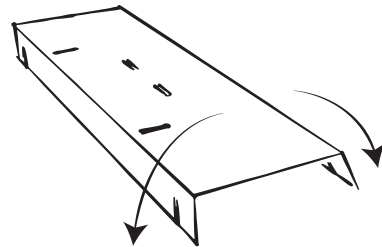


1. Check that you have all the parts.

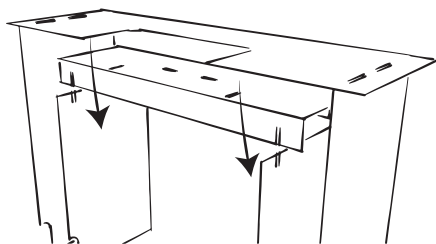
2. Fold the five flaps from A backwards as shown here. Make sure you fold the top to the side where the cut is, so that the smooth side is at the front.



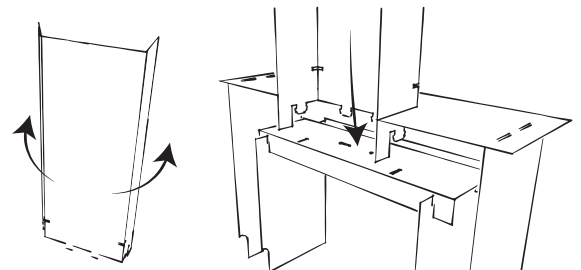
3. Attach the top with the cutouts on the side.



4. Fold over the sides of B.



5. Slide part B into the incisions on the back of A.



6. Fold the sides of part C to make the chimney. Then place it with the protrusions on the other side in the holes of part B.