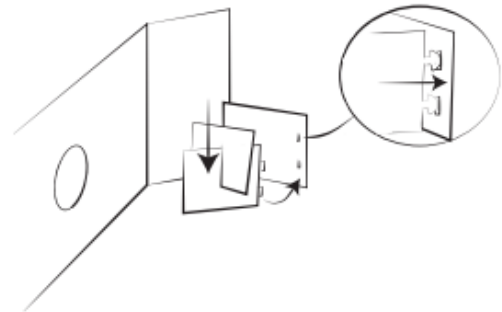
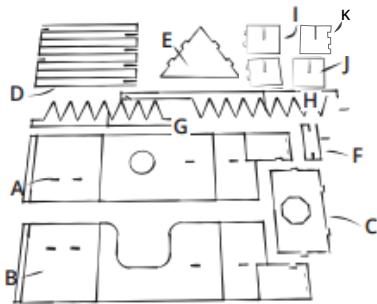
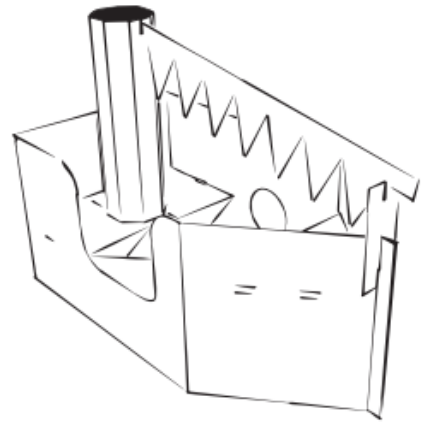


BOAT

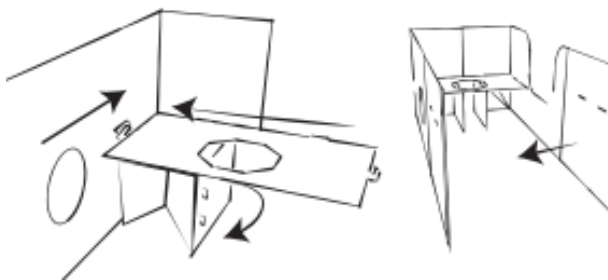
WHAT'S IN THE BOX?

- 1x Steamer body with hole A
- 1x Steamer body with entrance B
- 1x Rear seat C
- 1x Chimney D
- 1x Front triangle E
- 1x Locking part F
- 2x Flags G and H (these are extra)
- 2x Bottom part with 2 clickers I
- 1x Bottom part without clickers J
- 1x Bottom part with 3 clickers K

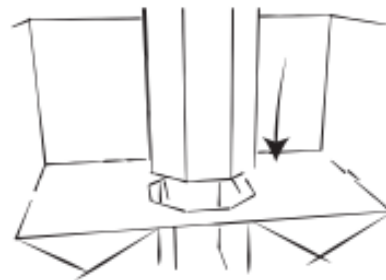


1. Take the parts out of the box. Check whether you have all the parts.

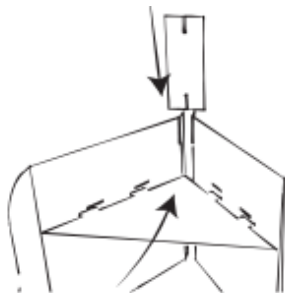
2. Slide parts I and J together and slide them in part A. Then slide parts into I and K and slide them into place in part B.



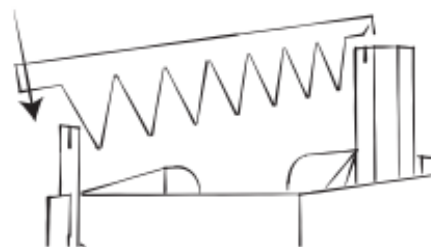
3. Fold the flap of part A under the seat. Slide part C into part A. Repeat with part B.



4. Fold the chimney around and slide through C's hole.



5. Fold the front of A and B to a point, slide in triangle E and secure with the part F.



6. Slide flag G into the incisions of D and F. Flag H is a spare.