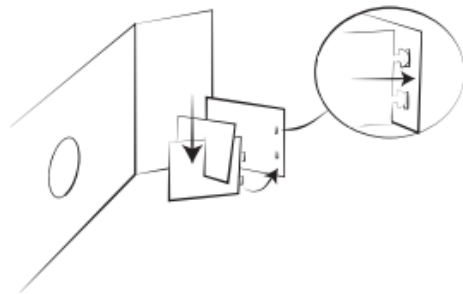
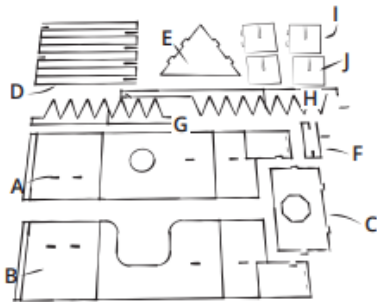
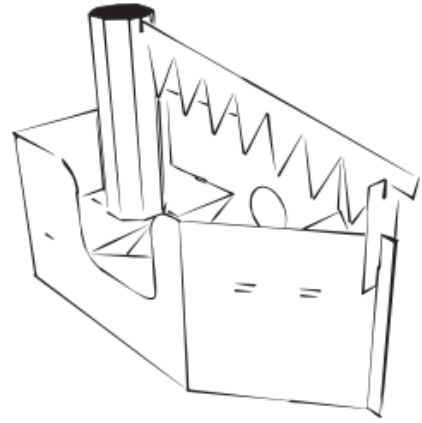


Boat

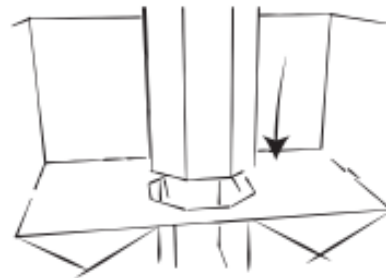
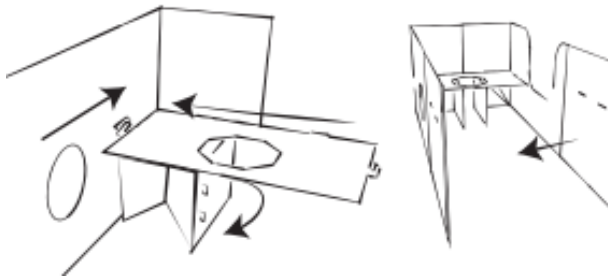
WHAT'S IN THE BOX?

- 2x Steamboat body A and B
- 1x Rear seat C
- 1x Chimney D
- 1x For triangle E
- 1x Locking part for F
- 2x Flags G and H (this one is extra)
- 2x Base with clickers I
- 2x Base without clickers J



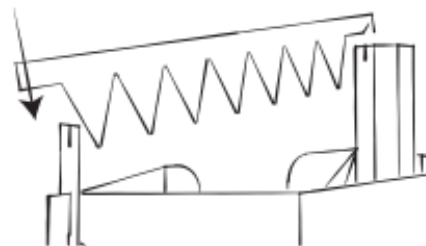
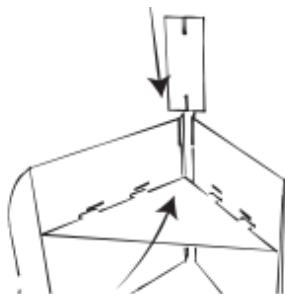
1. Take the parts out of the box. Check if you have all the parts.

2. Slide parts I and J together and click them into part A. Do the same for part B.



3. Fold the flap of part A under the seat. Slide part C into part A. Repeat with part B.

4. Fold the chimney around and slide through the hole of C.



5. Fold the fronts of A and B to a point, slide triangle E in and fasten with part F.

6. Slide flag G into the incisions of D and F. Flag H is a spare.