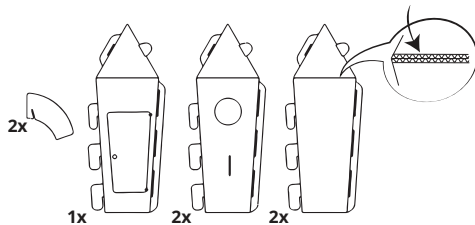
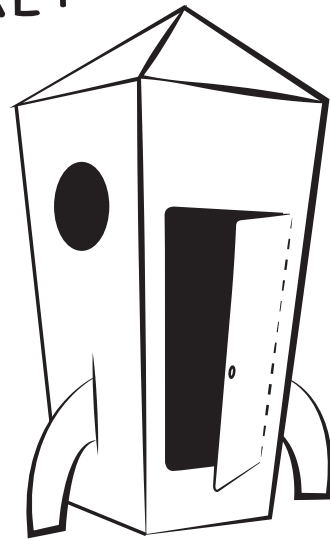


KARTENT ROCKET

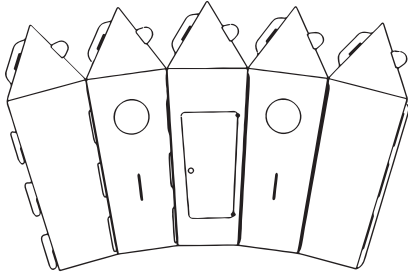
WHAT'S IN THE BOX?

- 2x Rocket leg
- 1x Rocket part door
- 2x Rocket part window
- 2x Rocket part closed



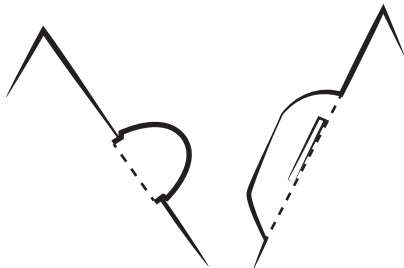
1.

Check that you have all the parts. Some of the folding lines are already incised, this makes folding easy!



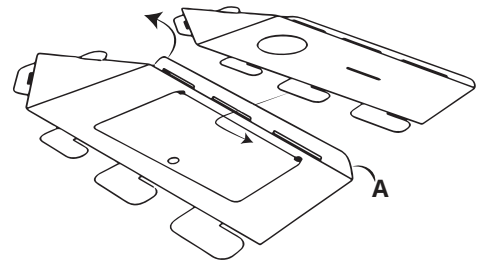
3.

Repeat the previous step until the rocket looks like the one above.
(pay attention to the order)



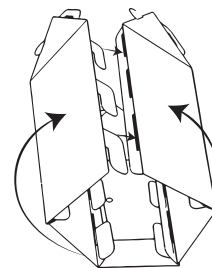
5.

Fold the flaps over at the top and fold them all around to close. (5x)



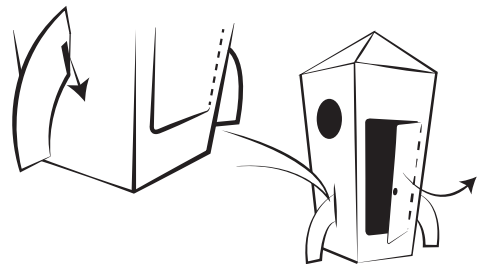
2.

Make sure the incision is facing you. Fold flap A upwards, insert the hooks of the next item through it and slide down.



4.

Fold the parts as above. Insert the flaps through the recesses and slide them down.



6.

Insert the legs into the holes (2x) and carefully unfold the door, your rocket is now ready!